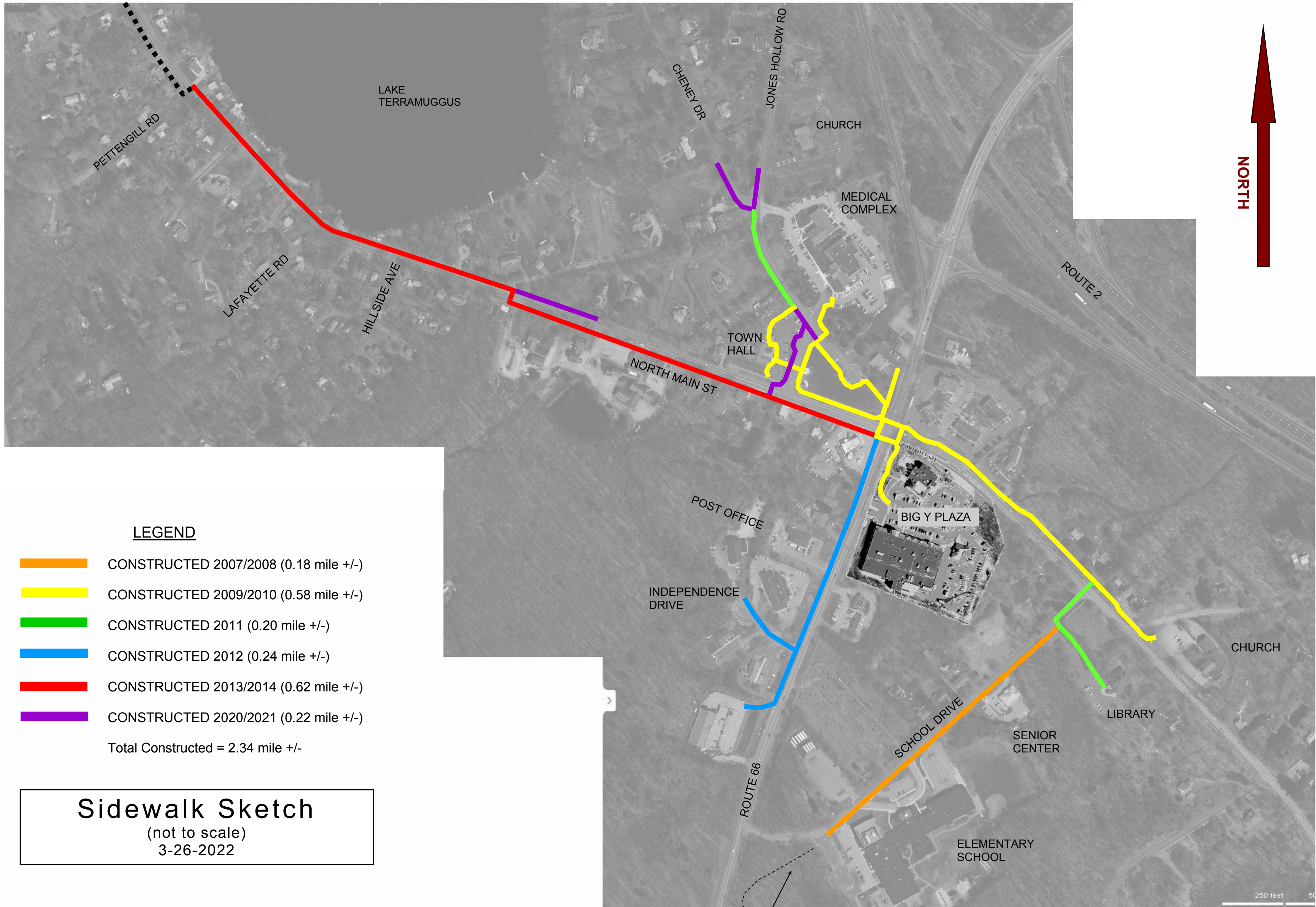


0.53 MILE OF SIDEWALKS IN DESIGN FOR A SPRING 2023 CONSTRUCTION. PETTENGILL ROAD TO LAKE ROAD.



**LEGEND**

- CONSTRUCTED 2007/2008 (0.18 mile +/-)
  - CONSTRUCTED 2009/2010 (0.58 mile +/-)
  - CONSTRUCTED 2011 (0.20 mile +/-)
  - CONSTRUCTED 2012 (0.24 mile +/-)
  - CONSTRUCTED 2013/2014 (0.62 mile +/-)
  - CONSTRUCTED 2020/2021 (0.22 mile +/-)
- Total Constructed = 2.34 mile +/-

**Sidewalk Sketch**  
 (not to scale)  
 3-26-2022

**Note:**

This sketch is intended to show the general layout of the sidewalks. It is not to be construed as an accurate survey drawing. Lengths shown are approximate.

ELEMENTARY SCHOOL TRAIL NETWORK