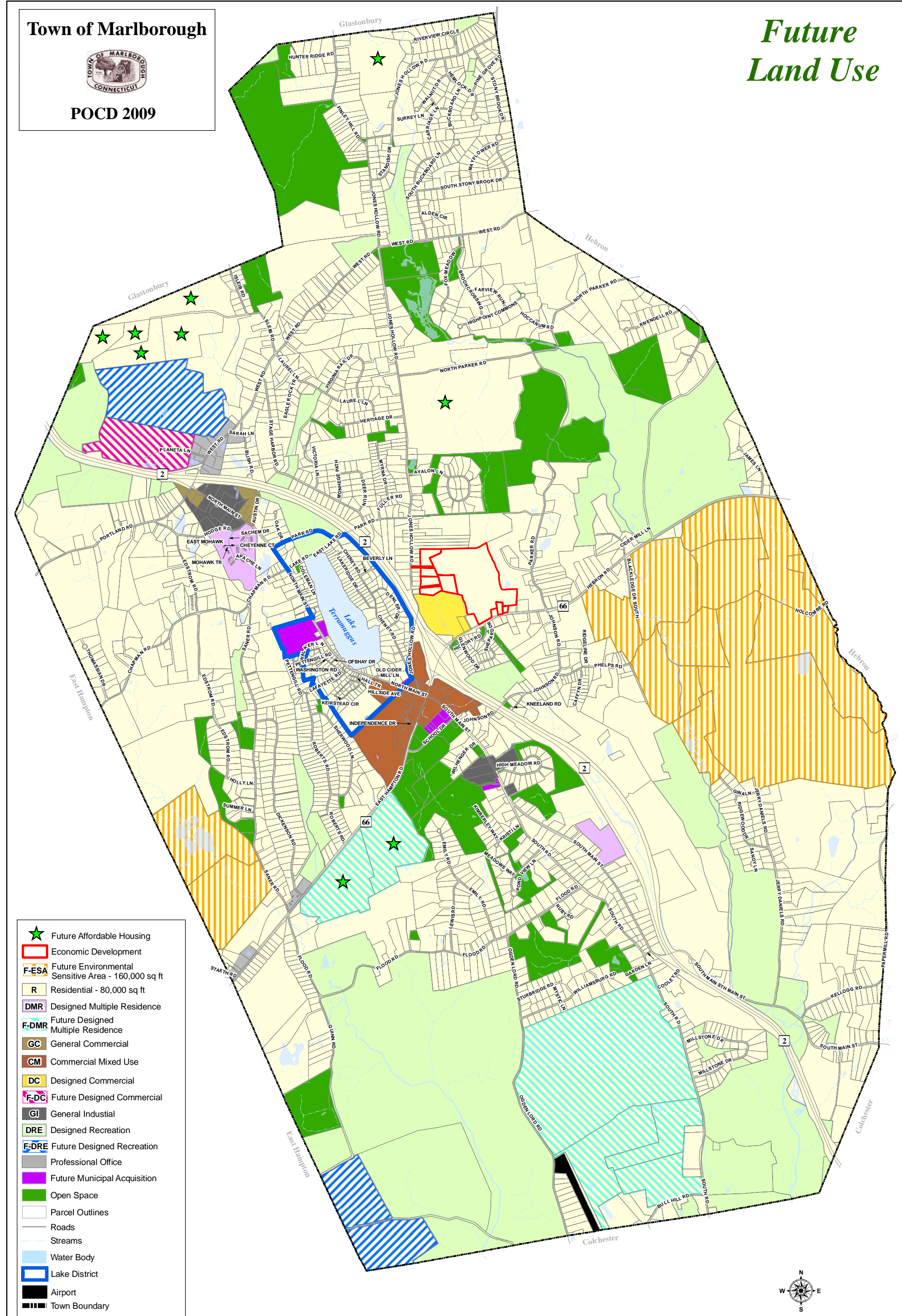


# Town of Marlborough

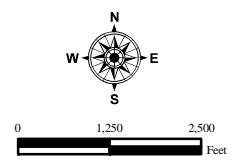


POCD 2009

# Future Land Use



- Future Affordable Housing
- Economic Development
- Future Environmental Sensitive Area - 160,000 sq ft
- Residential - 80,000 sq ft
- DMR Designed Multiple Residence
- F-DMR Future Designed Multiple Residence
- GC General Commercial
- CM Commercial Mixed Use
- DC Designed Commercial
- F-DC Future Designed Commercial
- GI General Industrial
- DRE Designed Recreation
- F-DRE Future Designed Recreation
- Professional Office
- Future Municipal Acquisition
- Open Space
- Parcel Outlines
- Roads
- Streams
- Water Body
- Lake District
- Airport
- Town Boundary



**Tighe & Bond**  
December 2009