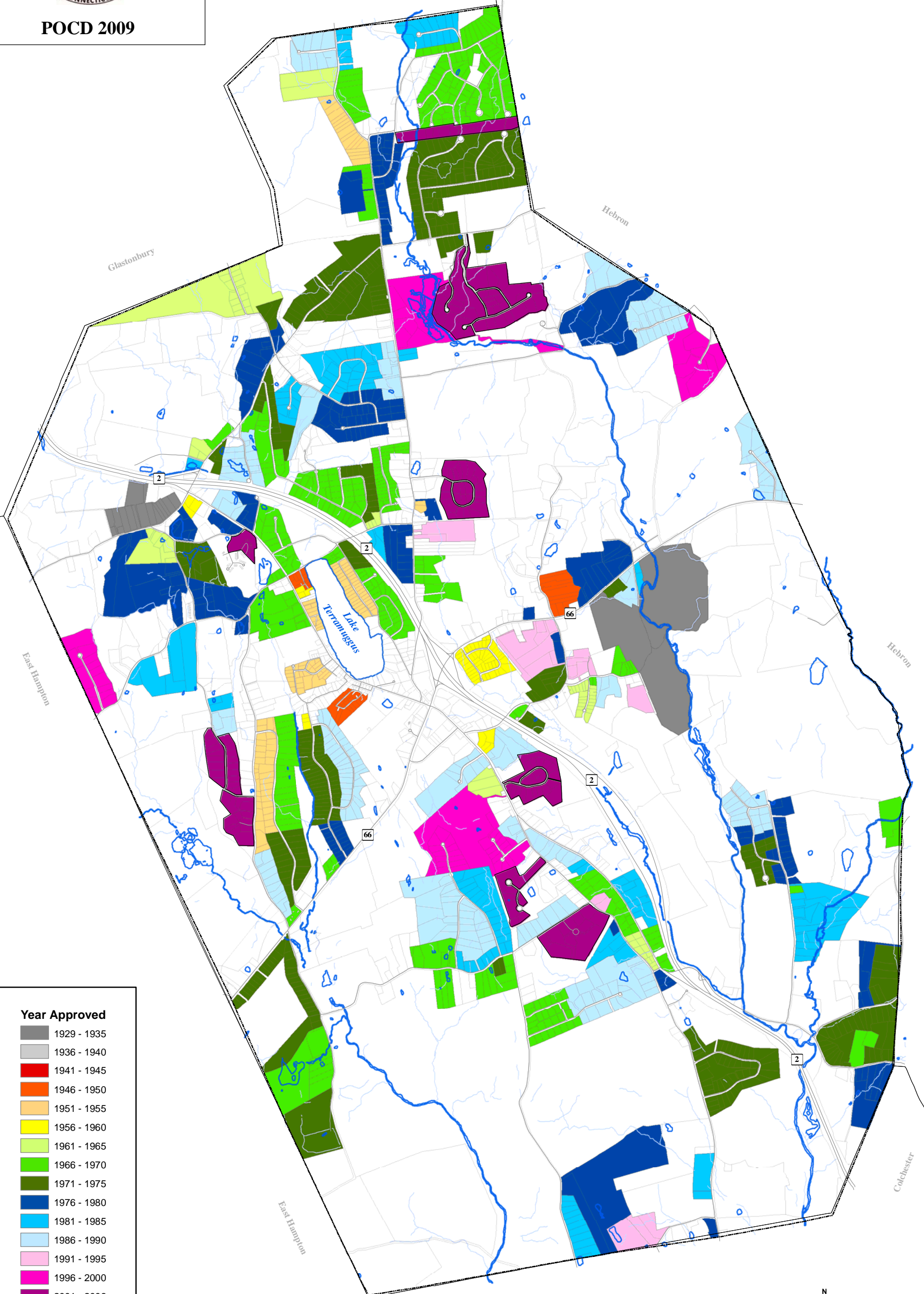


Town of Marlborough



POCD 2009

*Subdivision
Development*



Year Approved

- 1929 - 1935
- 1936 - 1940
- 1941 - 1945
- 1946 - 1950
- 1951 - 1955
- 1956 - 1960
- 1961 - 1965
- 1966 - 1970
- 1971 - 1975
- 1976 - 1980
- 1981 - 1985
- 1986 - 1990
- 1991 - 1995
- 1996 - 2000
- 2001 - 2006

Tighe & Bond
December 2009



0 625 1,250 2,500
Feet